

THE EMPLOYMENT AND VOCATIONAL TRAINING INSTITUTE

IEFP's role and collaboration with social partners

14 November 2017
SOFIA VENTURA



Topics

- *Our mission*
- *Our goals*
- *Organisational structure*
- *Services for citizens and companies*
- *Human Resources*



➤ **IEFP'S MISSION**



To promote the creation of quality jobs and to fight unemployment by implementing active employment policies, specifically vocational training.

Topics

- *Mission*
- **Goals**
- *Organisational structure*
- *Services for citizens and companies*
- *Human Resources*



➤ GOALS

PROMOTE:

- the organisation of the labour market, considering the adjustment between job demand and supply;
- information, counselling, qualification, and reskilling;
- the scholastic and professional qualification of younger generations and adults;
- the access to the labour market for disabled people.



➤ GOALS

INCENTIVISE:

- the creation and preservation of jobs by carrying out adequate measures in light of the economic background and the employers' traits;
- the access to the labour market of different groups implementing specific measures; especially those groups with the highest risk of being excluded from the labour market.



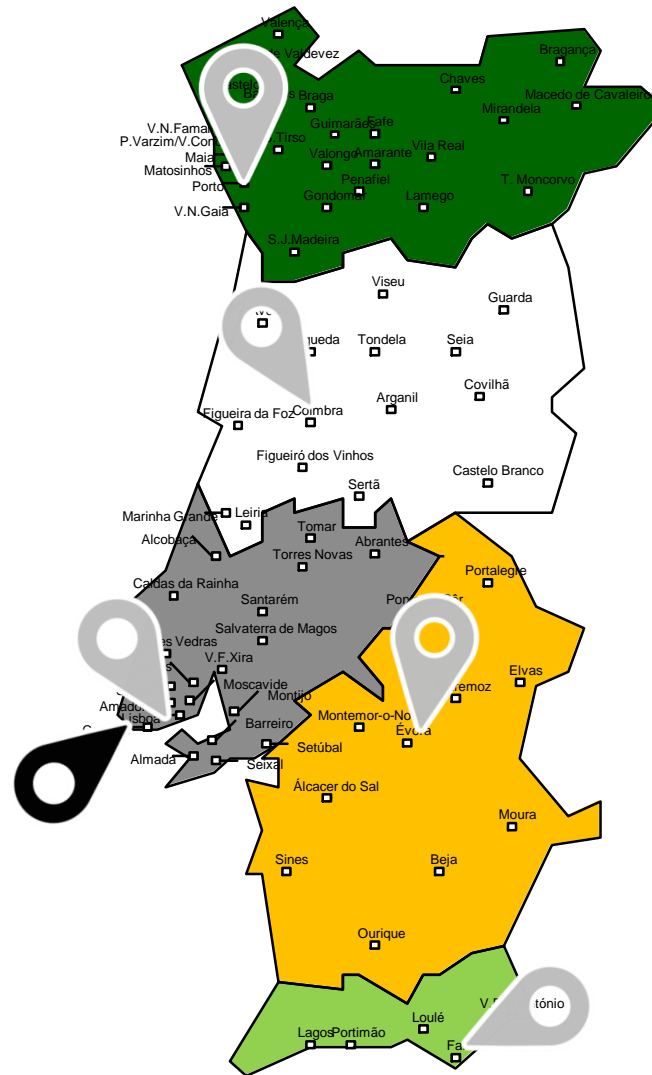
Topics

- *Mission*
- *Goals*
- ***Organisational structure***
- *Services for citizens and companies*
- *Human Resources*



➤ Organisational structure

DECENTRALISED



 **CENTRAL SERVICES**



5 REGIONAL DELEGATIONS
(Norte, Centro, Lisboa and Vale do Tejo, Alentejo and the Algarve)



LOCAL SERVICES:

30 Employment and Vocational Training Centres

23 Employment Centres

1 Training and Professional Rehabilitation Centre

23 Co-Management - Sectorial Centre

TRAINING AREAS (+20)

- Audiovisual and Media Production
- Logistics
- Accounting
- Aeronautics
- Mechatronics
- IT
- Metalworking
- Welding
- Electricity and Energy
- Electronics and Automation
- Hotels and Restaurants



TRAINING AREAS



- Textiles
- Metalworking and Fittings
- Civil Engineering
- Animal rearing and agriculture
- Floriculture and Gardening
- Health Services
- Education
- Beauty
- Secretarial work and Admin
- Cooking/Baking
- Building and Repairing Vehicle

Topics

- *Mission*
- *Goals*
- *Organisational structure*
- ***Services for citizens and companies***
- *Human Resources*



➤ *Services for citizens and companies*



Job-seeking support



Professional counselling



Allocation to specific job offers



Support in becoming self-employed or creating one's own company

SERVICES
FOR THE
CITIZEN



➤ *Services for citizens and companies*



Professional integration support



Vocational training



Professional rehabilitation

SERVICES
FOR THE
CITIZEN



➤ *Services for citizens and companies*



Spreading job offers



Selection and recruitment



Employee allocation



Support and incentives



Employee training

**SERVICES
FOR THE
COMPANIES**



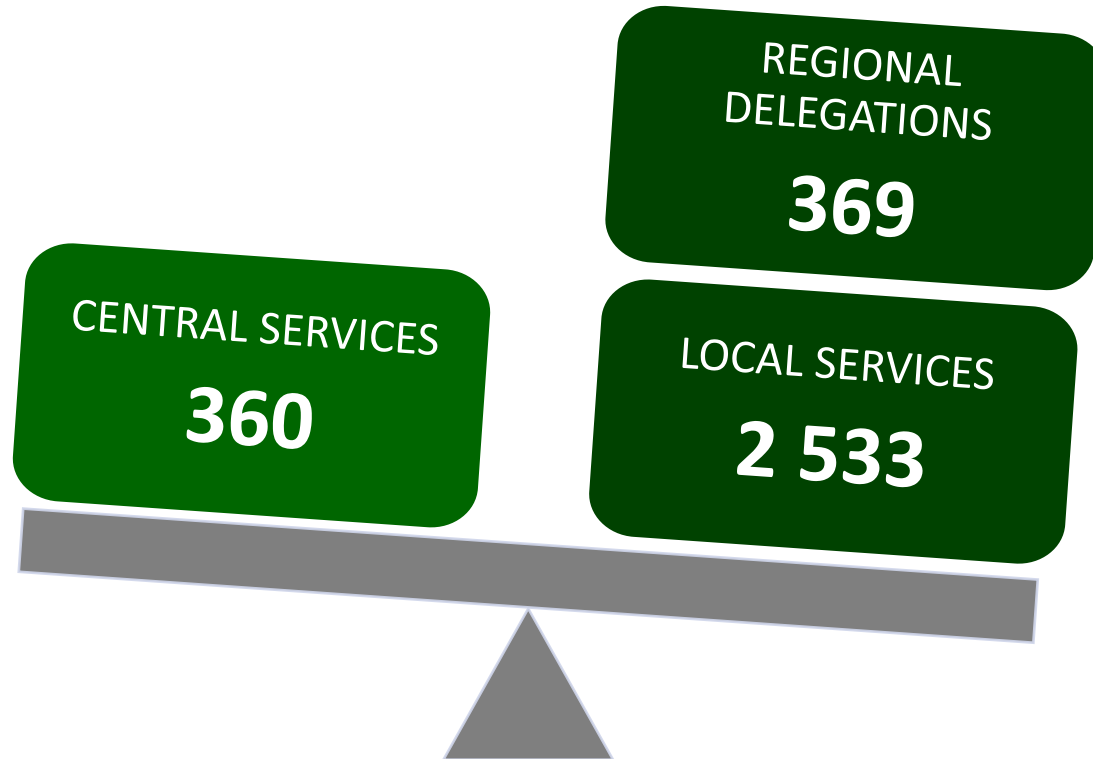
Topics

- *Mission*
- *Goals*
- *Organisational Structure*
- *Services for citizens and companies*
- ***Human Resources***



➤ *Organisational structure*

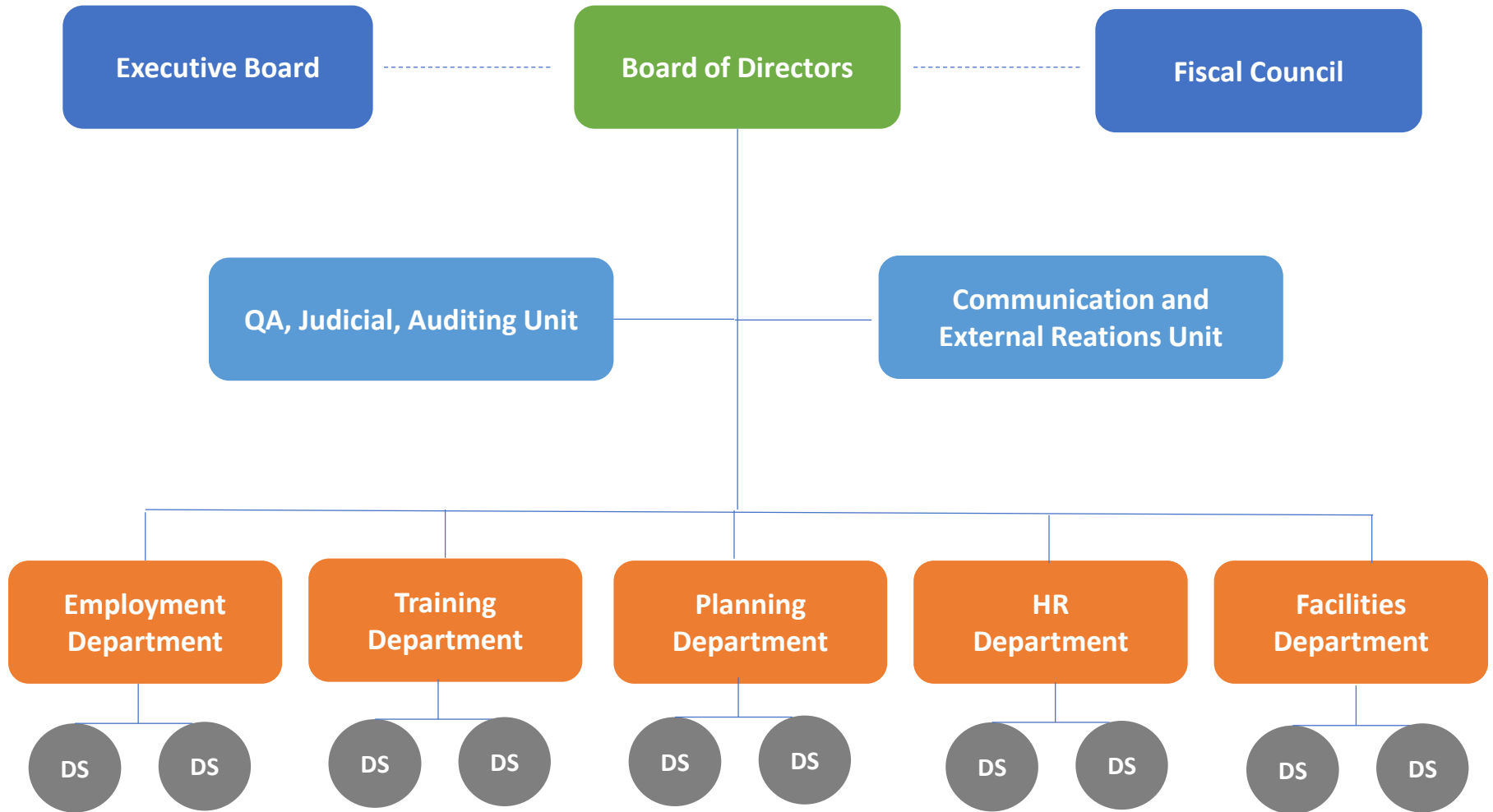
EMPLOYEES



3 262



➤ Organisational structure | CENTRAL SERVICES



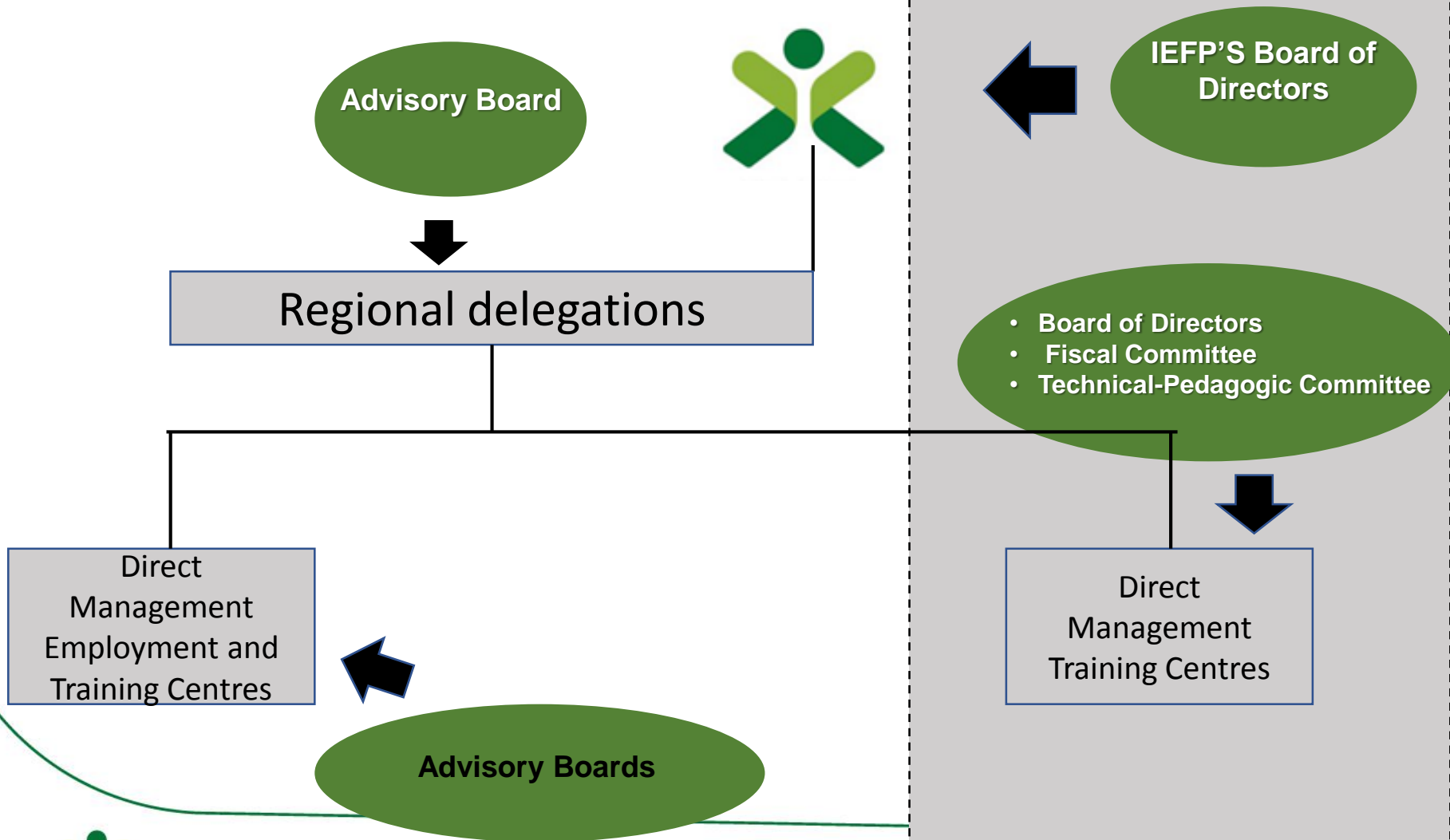
➤ *Organisational structure*

IEFP'S SOCIAL PARTNERS

TRIPARTITE BODY



IEFP'S SOCIAL PARTNERS



IEFP'S SOCIAL PARTNERS

Scope:

- Monitor IEFP activities - proposals, suggestions, recommendations
- Approve Activity Plans and Reports
- Give their opinion on the structure of the services
- Develop the employment services to **adapt the skills to the labour market**
- Develop policies to **avoid scarcity of professional skills**



IEFP'S SOCIAL PARTNERS

Scope:

- Improve **effectiveness of the labour market**
- Contribute to **implementing the EU goals** when it comes to life-long learning, increasing the employment rate, equal opportunities, fighting discrimination, etc.



Thank you!

SOFIA VENTURA
sofia.ventura@iefp.pt

