

# SETUBAL'S EMPLOYMENT AND VOCATIONAL TRAINING CENTRE

## VOCATIONAL TRAINING DEPARTMENT



November 2017



## ▫ Role and location

Setubal's Employment and Vocational Training Centre is made up of two departments:

the Employment Department;

the Vocational Training Department.

Located on the Setubal peninsula, it's in a privileged area of Setubal city, covering a region with different needs and traits, making the most of its accessible geographical location.



## ▫ Area

Besides the municipalities of **Setubal and Palmela**, Setubal's Employment and Vocational Training Centre also covers the remaining municipalities on the Setubal peninsula, especially Montijo, Moita, Barreiro and Alcochete (fig.1).



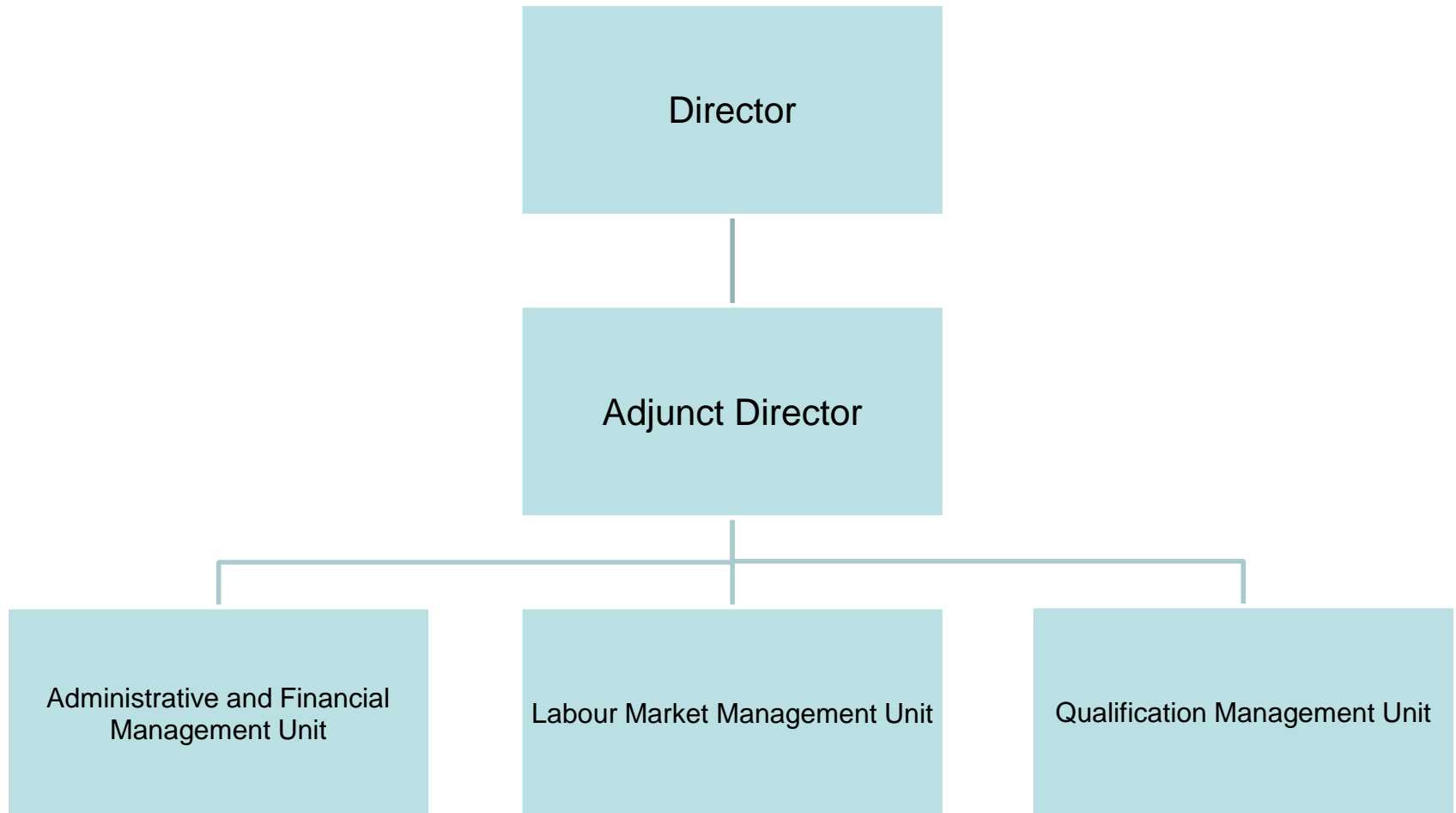
## ▣ Covered areas



Fig. 1 – Setúbal peninsula



# Organisational chart



## ▪ About us

Our team

**34 people - Training**

**26 people - Employment**



## ▫ Training spaces

### Laboratories / Workshops

Hairdresser	1	Meteorology lab	1
Esthetician - Cosmetologist	1	Aeronautics Lab	1
Manicure-Pedicure	1	Electronics	1
Waitstaff-Bar	1	Electricity workshop	1
Kitchen	1	Metalworking	1
Hydraulics/Pneumatics	1	Electricity / ITED – ITUR*	1
Mechanical Construction	1	Refrigeration, Heating, and Air conditioning	1
Welding	1	Hotel	1
Mechanics/Aluminium	1	Photo lab / workshop	1
CNC Lab	1	Logistics	1



## ▣ **Training areas – units**

- **Metallurgy and metalworking**
- **Electricity and energy**
- **Aeronautics**
- **Logistics**
- **Floriculture and Gardening**
- **IT**



## ▫ **Training areas – units**

- **Audiovisual and Multimedia production**
- **Marketing and advertising**
- **Management and Administration**
- **Secretarial and Administrative work**
- **Healthcare**
- **Gardening and agriculture**
- **Tourism and leisure**



# Training types

Training types	Target audience		
	Employment relation	Age	Education
Apprenticeships	1st job or unemployed	$\geq 15 \leq 25$	9th year of compulsory education
Technology specialisation	1st job or new job	$\geq 16$	Secondary education
Adult Teaching and Training	1st job or new job	$\geq 18$	Less than the 4th, 6th, or 9th year of compulsory education
Modular training	Employed / unemployed	$\geq 18$	Compulsory education



▫ **Trainees reached in 2016**

**5,018 trainees**



## ▫ Activities carried out in 2016

# 254 activities



## ▫ Training activities

### SETUBAL'S VOCATIONAL TRAINING SERVICE

TRAINING ACTIVITIES	2014		2015		2016		2017 FORECAST	
	Trainees covered	Training hours	Trainees covered	Training hours	Trainees covered	Training hours	Trainees covered	Training hours
	13,715	#####	11,110	#####	5,018	#####	5,500	#####

