

# PARTNERING FOR YOUTH GUARANTEE SUCCESS: SUSTAINED STRENGTHENING OF THE OUTREACH APPROACH

YOUTH GUARANTEE STRATEGY 2026–2030 | PORTUGAL

**Luz Pessoa e Costa**

Director, Vocational Training Department  
IEFP, Institute for Employment and Vocational Training (Portugal)

LISBON | 19<sup>TH</sup> MAY 2026



# THE CHALLENGE

---

## Institutional challenges

---

- ✓ Skills mismatches, including insufficient alignment of education and training with labour market demands;
- ✓ Health issues, particularly mental health;
- ✓ Limited infrastructure support, such as availability of childcare services and public transportation;
- ✓ Persistent socio-economic challenges, including housing affordability;
- ✓ Outreach to all young NEETs, particularly those who are inactive and further from the labour market.

## Structural and personal barriers

---

- ✓ Low qualification levels, requiring reskilling or upskilling;
- ✓ High expectations among better-qualified youth;
- ✓ Negative employers' attitudes towards young people;
- ✓ Disadvantaged socio-economic background, such as young mothers, Roma, migrants, or youth with disabilities.

# KEY CHALLENGES

**8,7%** of young people aged 15-29 are **NEET**

Not in employment, education or training

AROUND

**143K**

**YOUNG PEOPLE**



# OUR MOTTO

---

## Youth Guarantee Strategy 2026–2030



Identify



Activate



Respond

# OBJECTIVES

---



**Reduce** youth unemployment and **combat discouragement** and inactivity



**Ensure early, sustained, and engaging youth participation**



**Promote training and skill development** for young people



**Facilitate access** to the labor market and promote **job sustainability**



**Engage partners** and **strengthen integrated services tailored** to young people

# PRINCIPLES

---



1 **Active inclusion:** leave no one out.

2 **Voluntary participation and commitment:** participation by choice and with commitment

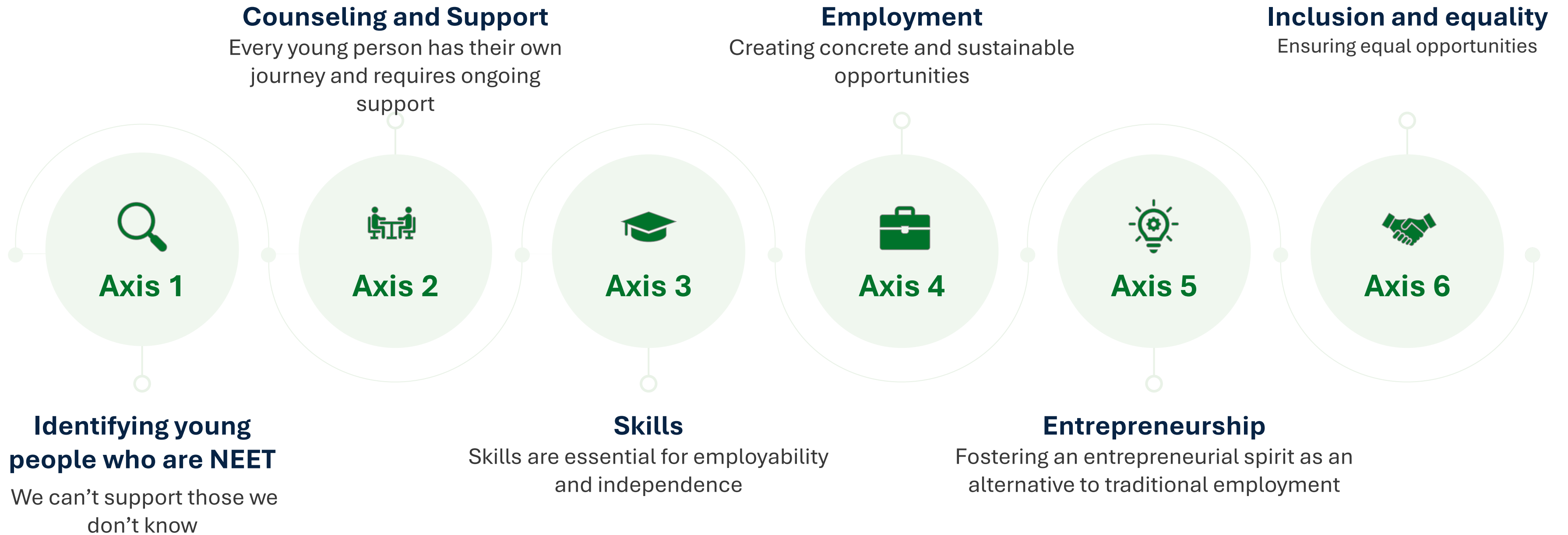
3 **Systemic approach:** to look at all aspects of the young person's life.

4 **Partnership:** collaboration between public and private entities.

5 **Transparency and communication:** clear and transparent sharing of information among everyone.

6 **Quality:** monitor and evaluate to improve.

# AXIS



Key factors for the effective implementation of the Strategy

# COMMUNICATION

## Key principles of the communication strategy



# MONITORING AND EVALUATION

Responsibility, primarily of the IEFP

## KPI Monitoring

- ✓ Employment, unemployment and youth inactivity rates;
- ✓ NEET rate among young people;
- ✓ Rate of entry into employment, training or an internship;
- ✓ Average response time after Youth Guarantee support activation.

## Performance Assessment

- ✓ Use of quantitative and qualitative indicators to assess implementation and performance across the Youth Guarantee axis;
- ✓ Analysis and evaluation of different interventions;
- ✓ Active participation of partner institutions in sharing implementation, financial and progress data.

 **Annual monitoring report** presenting statistical data, implemented measures and achieved results.

# GOVERNANCE MODEL

Collaborative and integrated approach



The Youth Guarantee **MONITORING COMMITTEE** includes

- 1 **IEFP, IP** Chair of the Committee
- 2 **Instituto da Segurança Social, IP**
- 3 **Instituto Português do Desporto e Juventude, IP**
- 4 **Direção Geral do Emprego e das Relações de Trabalho**
- 5 **Direção Geral da Educação**

# KEY PARTNERS

## CENTRAL COORDINATION



Instituto Português do Desporto e Juventude, IP



Instituto da Segurança Social, IP



IAPMEI



AIMA

## LOCAL COORDINATION



Local municipalities



Education



Health



Business associations



Local Associations



CGP



CPCJ

# EX.: PILOT PROJECT ALMA INITIATIVE

— Aim, Learn, Master, Achieve

EU initiative supporting the **social empowerment** of disadvantaged **NEET youth aged 18–29**

## € FUNDING

Social  
Innovation   
Initiative

### IN PORTUGAL: TARGET GROUP

- ✓ NEET youth aged 18–29  
(In vulnerable and disadvantaged situations)
- ✓ Completed secondary education  
(12<sup>th</sup> grade)
- ✓ Registered with IEFP

## 3 PHASES

### 1 Preparation

Training and intensive support to prepare for mobility

### 2 Mobility

Mobility phase in a European country (3 months) with work experience

### 3 Reintegration

Support after return for labour market integration or further education

TARGET

# 250

YOUNG PEOPLE

BY 2028



# PARTNERING FOR YOUTH GUARANTEE SUCCESS: SUSTAINED STRENGTHENING OF THE OUTREACH APPROACH

THANK YOU FOR YOUR ATTENTION!

**Luz Pessoa e Costa**

Director, Vocational Training Department

IEFP, Institute for Employment and Vocational Training (Portugal)

LISBON | 19<sup>TH</sup> MAY 2026

