



FEBRUARY 2022

# THE ROLE OF CENTRES OF VOCATIONAL EXCELLENCE IN THE GREEN TRANSITION – GRETA: Let's excel together!

**Centres of Vocational Excellence (CoVEs)** are vocational institutions recognised for excellence in identifying and imparting relevant, high-quality, specialised technical skills. They are innovation hubs with strong ties to industry and business. They strive to provide exemplary initial training for young people and continuing education for adults, guiding them as they upskill and reskill through flexible, timely training programmes designed to meet the skills companies need.

**243**

**CoVEs**

- 9 EU countries
- 16 ETF partner countries
- 14 African countries

Created in December 2020, the **ETF Network of Excellence (ENE)** is a platform designed to encourage knowledge sharing, namely the continuous exchange of best practices among new and existing CoVEs at local, national, and international levels. The network builds bridges and partnerships with other CoVEs within the EU and beyond covering eight priority areas.

## WHAT IS GRETA?

GRETA stands for Greening Responses to Excellence through Thematic Actions. The acronym is a tribute to Swedish environmental activist, Greta Thunberg. This priority area supports the green transition through peer learning. The project recognises the opportunities that co-learning affords and aims to focus the development of greening initiatives for VET centres by VET centres.

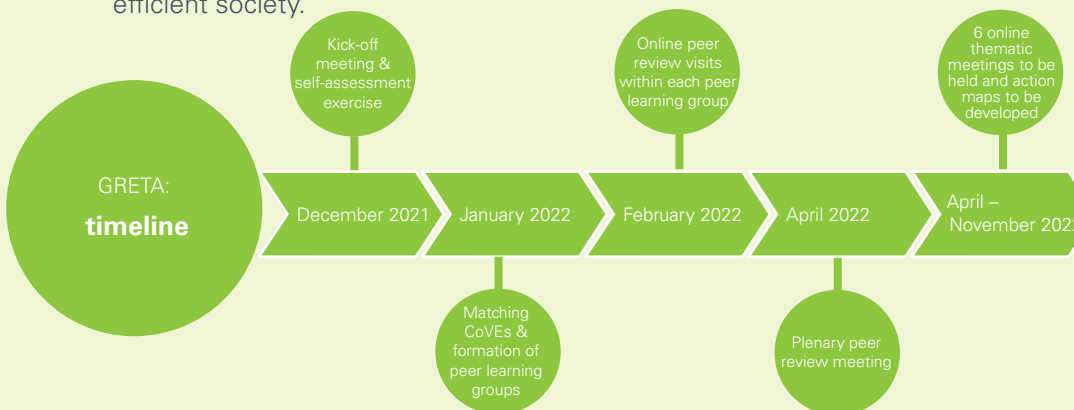
## DEFINING KEY TERMS

- **Going green** refers to the process of making CoVEs environmentally sustainable.
- **Green skills** refer to the skills needed to develop and support an environmentally sustainable and resource-efficient society.

**8**

## ENE priority areas

- Work-based learning
- Entrepreneurial Centres of Vocational excellence
- Pedagogy and professional development
- Smart specialisation
- Industry 4.0 and digitalisation
- Autonomy and public-private partnerships
- Going green
- Social inclusion and equity

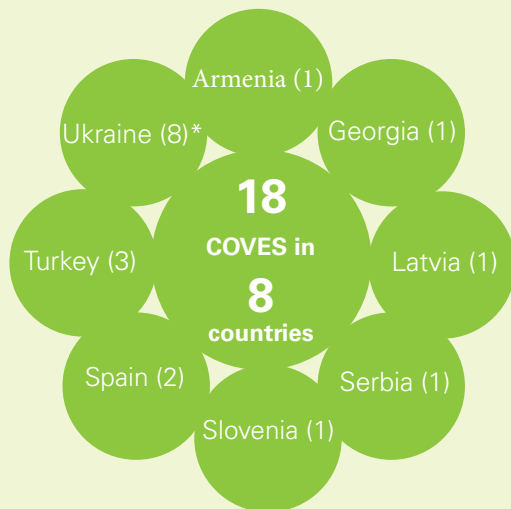




FEBRUARY 2022

## WHO IS INVOLVED?

The [Danish Technological Institute \(DTI\)](#) is working with GRETA to help participating CoVEs' achieve their green goals through peer learning and peer review exercises.



For more information on each CoVE, please visit [GRETA's Open Space page](#).

## HOW DOES GRETA WORK?

Throughout 2022, the 18 participating CoVEs will participate in a peer review process that began in December 2021 with a self-assessment exercise designed to identify each CoVE's needs in terms of going green and green skills. The six areas covered by the self-assessment include:

- Strategies for going green
- Providing green skills throughout the curriculum
- Enabling teachers and trainers to promote green skills
- Collaborating on going green initiatives with outside stakeholders
- Funding green initiatives
- Identifying objectives for peer learning activities

Based on results from the self-assessment exercise, the CoVEs were then matched with others to form peer learning groups that have since carried out peer review exercises of their own. An online plenary meeting with all 18 CoVEs will be held on 6th April 2022. This meeting will focus on green competences and how CoVEs can incorporate them into their curricula. They will also have the opportunity to share their experiences regarding the peer review process and to co-create content for six online thematic meetings that will explore how to accelerate greening processes for GRETA's participating CoVEs.

## WHAT'S IN IT FOR PARTICIPATING COVES?

Participating CoVEs will benefit from the opportunity to:

- share experiences and exchange effective practices on going green with other CoVEs,
- identify core strengths and weaknesses in terms of going green,
- be peer reviewed by another CoVEs,
- chart a path forward on how to help CoVEs go green and develop green skills,
- access a wide and diverse network of CoVEs as well as stakeholders in the public and private sectors, in ETF Partner Countries and EU Member States, and
- increase visibility through Open Space, the ETF online platform.

## FURTHER INFORMATION

You would like to get more information on GRETA?

Please write to us at:

[Susanne Nielsen](mailto:Susanne.Nielsen@etf.europa.eu) or [ETF.Network.for.Excellence@etf.europa.eu](mailto:ETF.Network.for.Excellence@etf.europa.eu)

[www.etf.europa.eu/ene](http://www.etf.europa.eu/ene)

© European Training Foundation, 2022  
Reproduction is authorised, provided the source is acknowledged.

\* The ETF, ENE and GRETA stand in solidarity with the people of Ukraine and with the eight Ukrainian CoVEs involved in this project. Through their commitment and contribution to GRETA, they remain valued participants of the initiative.