

# Big Data for Labour Market Intelligence

Capacity development programme 2022

**Module 1: Technical training**

**Session 2**

Presentation of the new dashboards: Ukraine, Lviv region, Egypt, Kenya

# What are ETF dashboards?



## "Big Data for Labour Market Intelligence" project

"Big Data for Labour Market Intelligence" is an experimental project based on the collection and analysis of job vacancies posted on the web (online job vacancies - OJV). OJVs are posted by thousands of employers on many different websites, with no standard structure or format and data are subjected to extensive cleaning and processing.

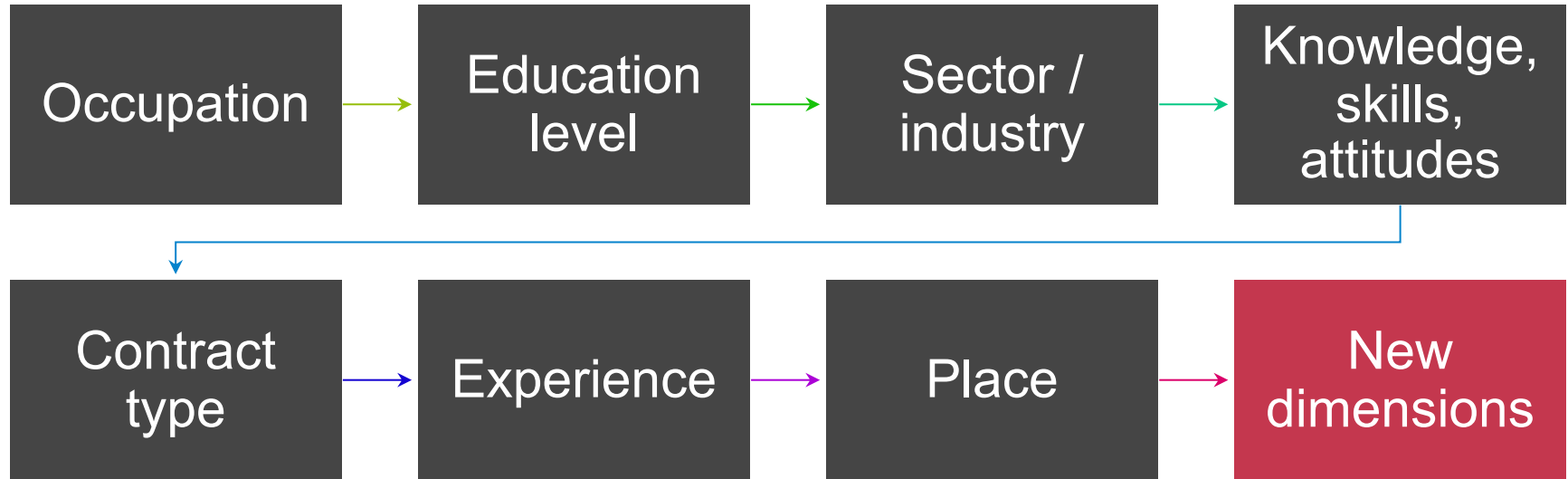
Hundreds of thousands of OJV collected processed and automatically classified against such international classifications / taxonomies as ISCED 2011, NACE, NUTS / ISO and ESCO provide unique insights on skills and occupational features and dynamics of labour markets.

ETF "Big Data for Labour Market Intelligence" project is being continuously improved. More information about OJV based labour market intelligence and challenges of using big data can be found at this [link](#)

ETF dashboards are a **powerful tool** for visualizing data collected and processed from **job postings** on the Web.

Visualizing the data makes it easy to answer a variety of analytical questions.

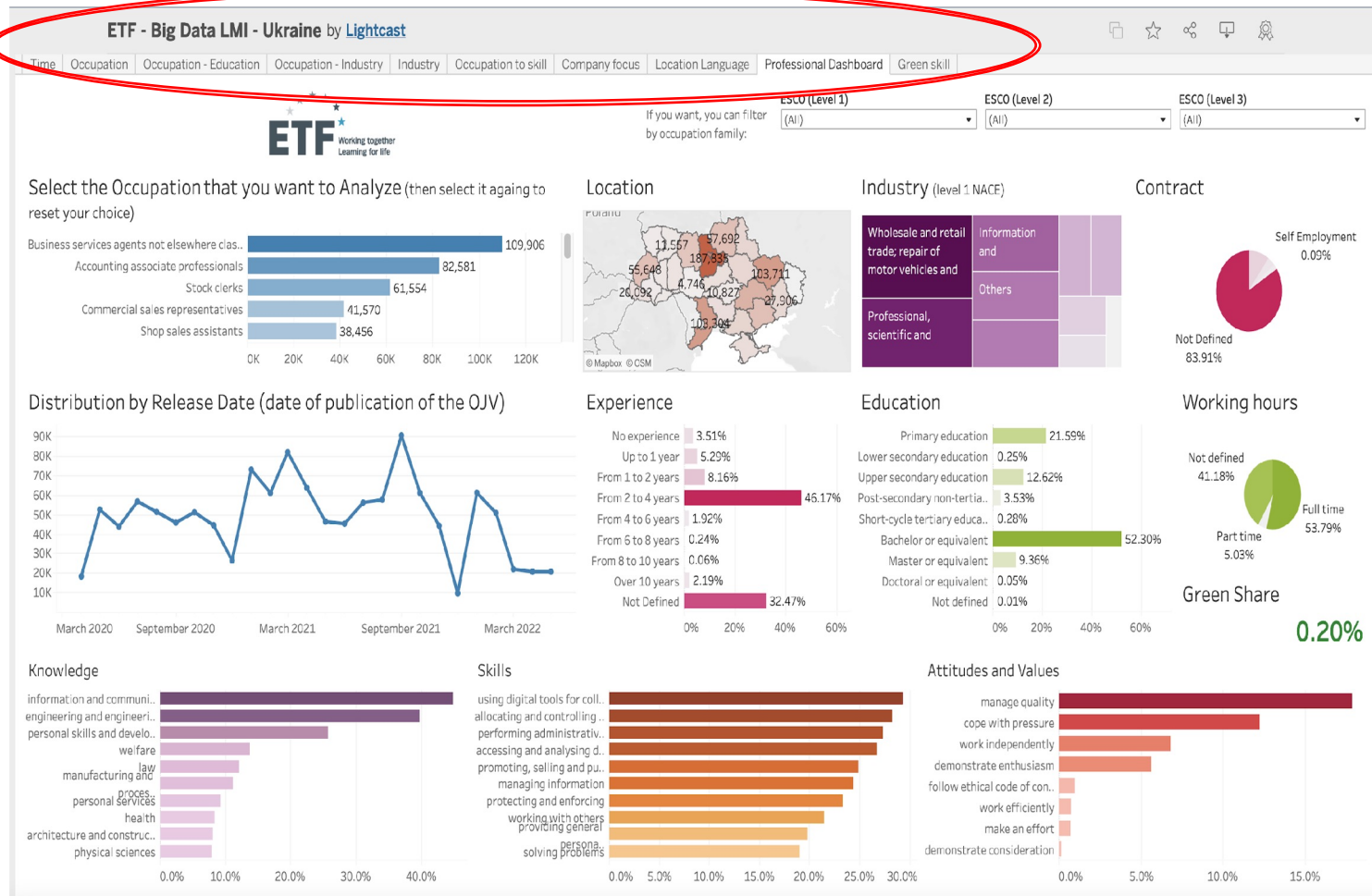
# VARIABLES – ANALYSED, COMBINED AND VISUALISED



# DASHBOARD: SKILLS AND OCCUPATIONS

## Variables:

1. Occupation
2. Skills
3. Education level
4. Experience
5. Salary
6. Location



## DATA CLASSIFICATION – TAXONOMY

- **Occupations:**  
ESCO/ISCO08
- **Skills:** ESCO
- **Location:** NUTS and ISO
- **Educational Level:**  
ISCED
- **Sector:** NACE



# What can we find in **ETF** dashboards?

## Analytical perspectives:

- Time
- Occupation
- Occupation - Education
- Occupation – Industry
- Industry
- Occupation to skill
- Company focus
- Location Language
- Professional dashboard



# Extension and new dimensions

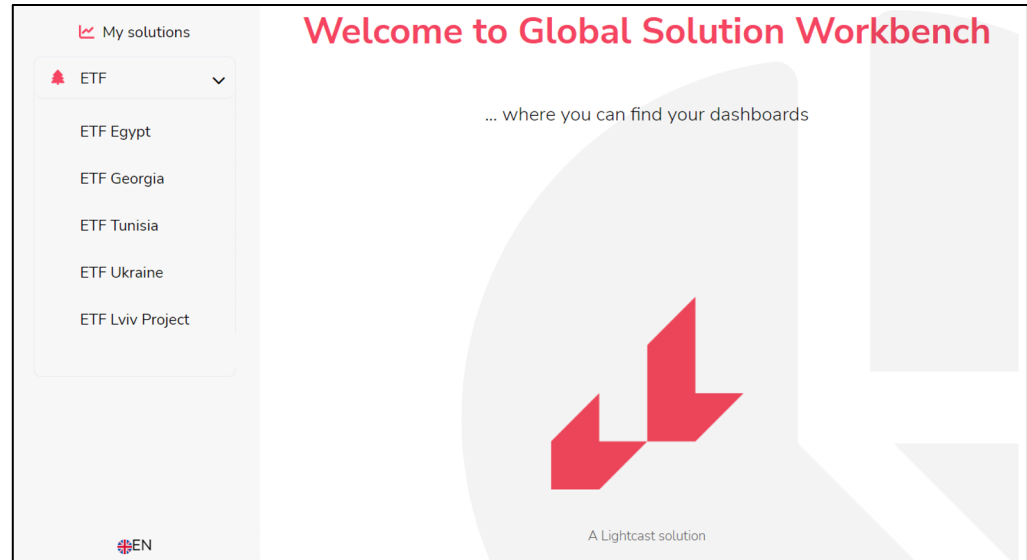
## Analytical perspectives:

- Green skills
- Remote working
- Supply-side analytics



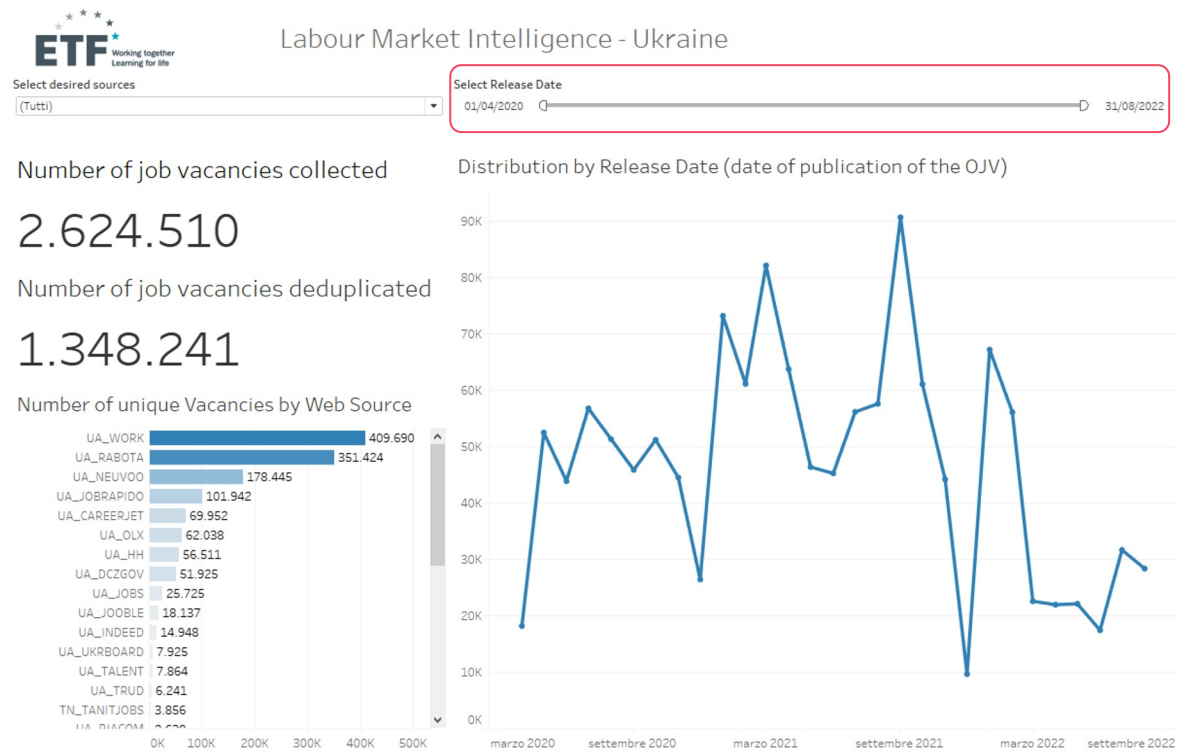
# How to access ETF dashboards?

<https://solutions.lightcast.io/>





# Analytical perspective: Time



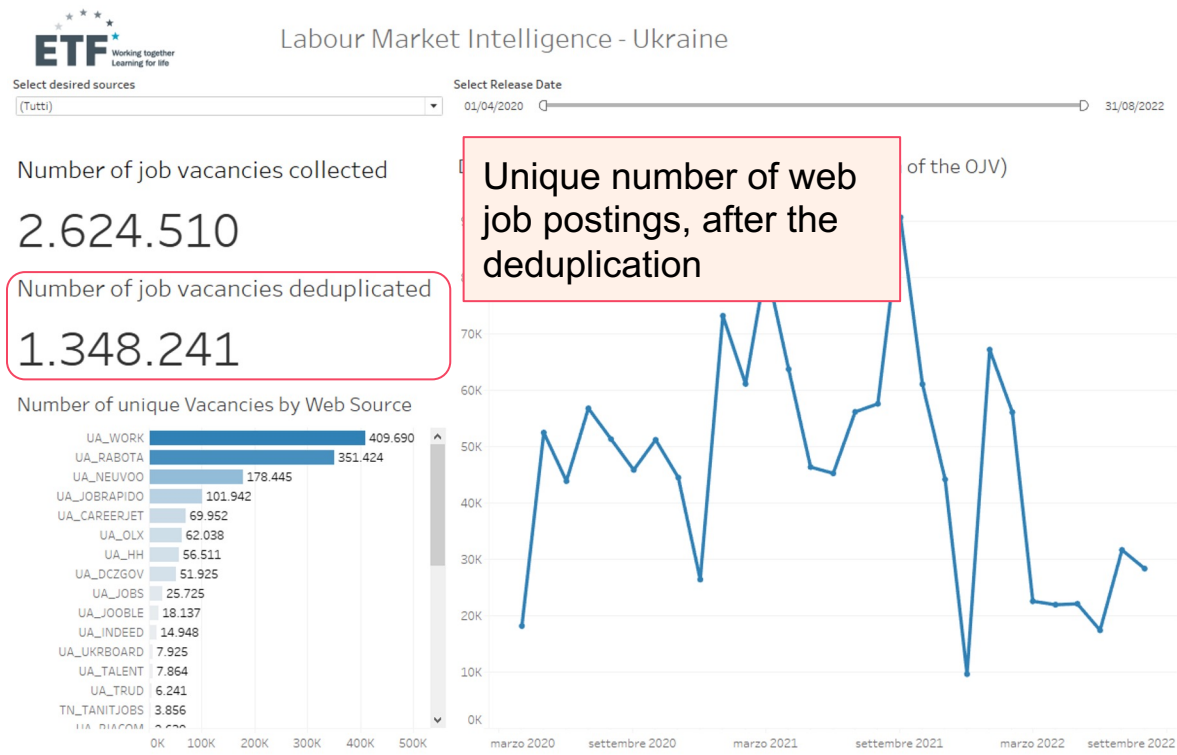
In this section you can find:

- the number of web job postings collected
- the final number of vacancies analyzed once the deduplication steps have been carried out
- the sources from which the vacancies came
- the monthly trend of the vacancies



*TIP: Changing the analysis period will also filter all subsequent views*

# Analytical perspective: Time



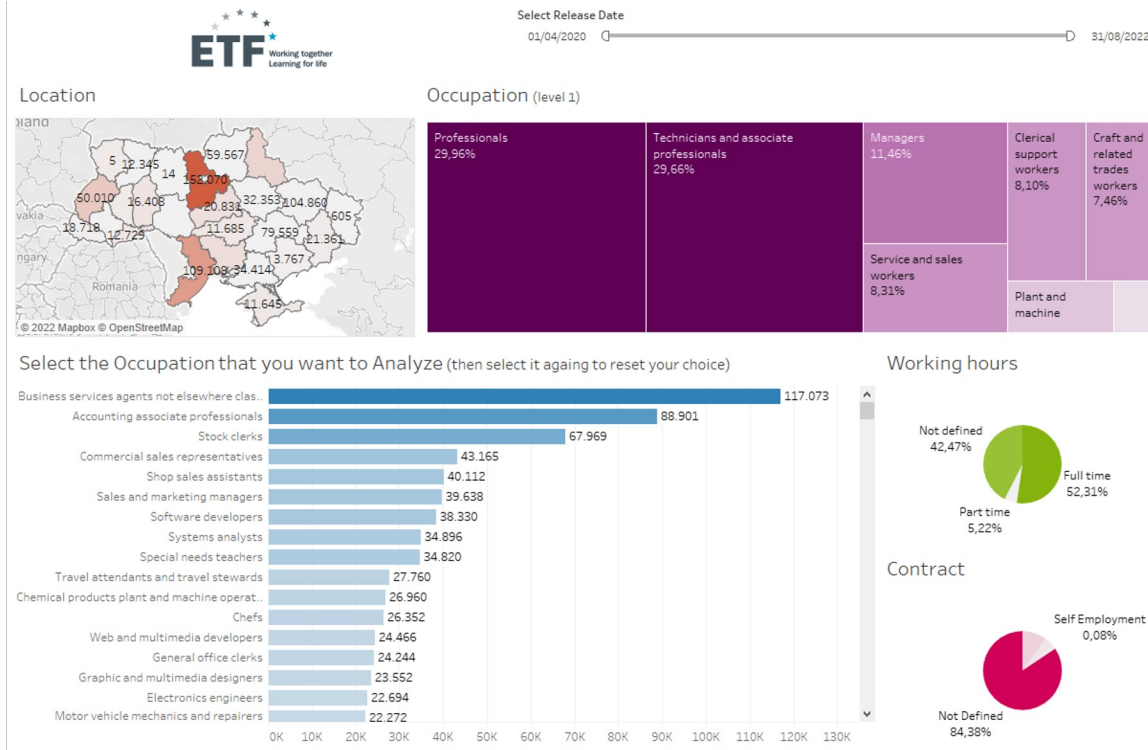
In this section you can find:

- the number of web job vacancies collected
- the final number of vacancies analyzed once the deduplication steps have been carried out
- the sources from which the vacancies came
- the monthly trend of the vacancies



*TIP: Changing the analysis period will also filter all subsequent views*

# Analytical perspective: Occupation



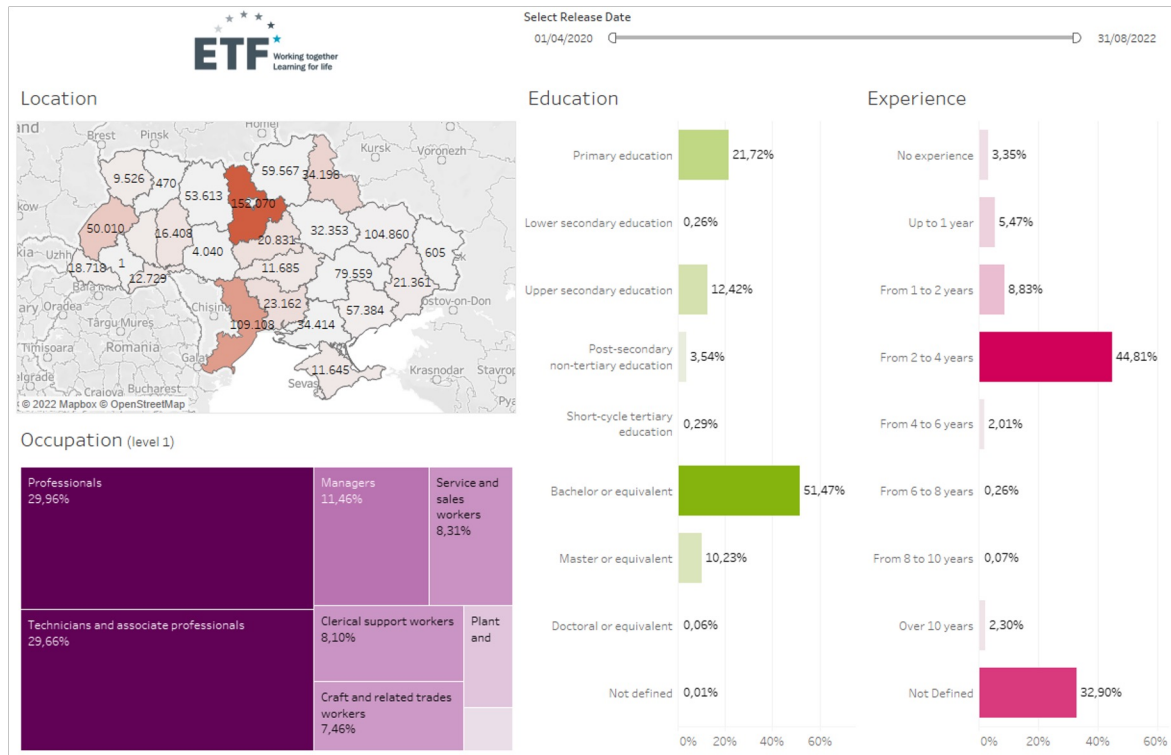
In this section you can find:

- the regional distribution,
- the number of web job vacancies for occupation at the first and the fourth level of ESCO classification,
- the distribution by type of working hours,
- the distribution by type of contract



*TIP: Selecting an element of the charts will filter the other views*

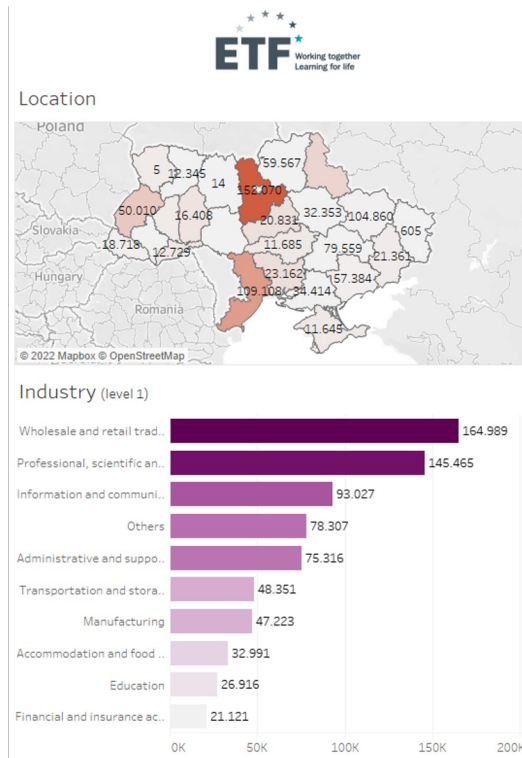
# Analytical perspective: Occupation - Education



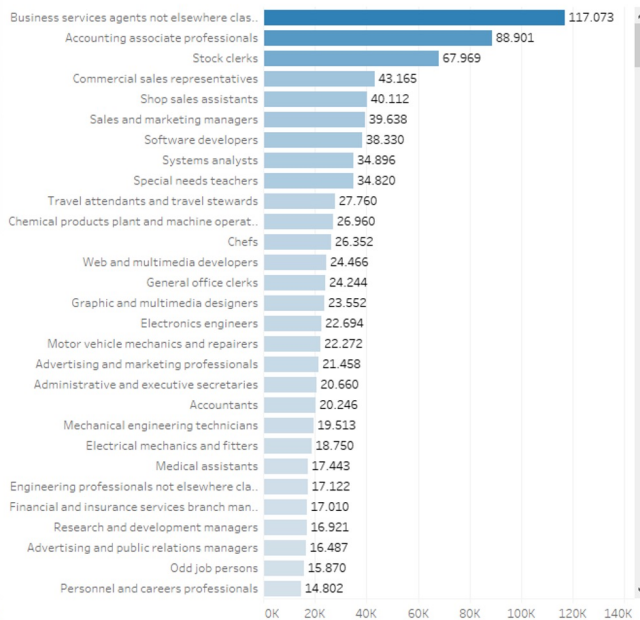
In this section you can find:

- the regional distribution
- the number of web job vacancies by occupation (ISCO08 level 1)
- the distribution by level of education (ISCED classification, level 1)
- the distribution by experience required

# Analytical perspective: Occupation - Industry



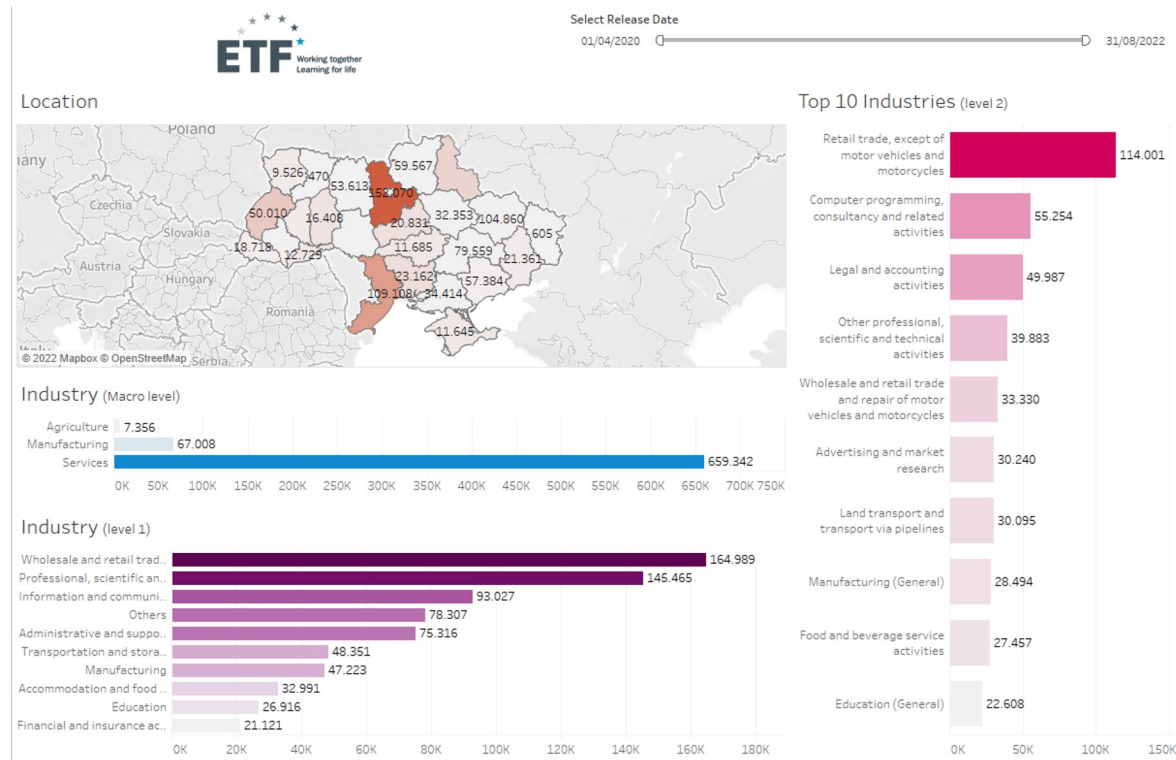
Select the Occupation that you want to Analyze (then select it again to reset your choice)



In this section you can find:

- the regional distribution
- the number of web job vacancies by occupation (ESCO level 4)
- the number of web job vacancies for industries at the first level of NACE classification

# Analytical perspective: Industry



In this section you can find:

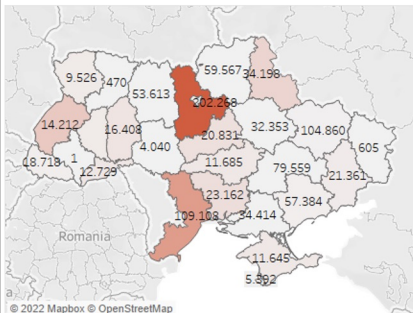
- the regional distribution
- the number of web job vacancies for macro level industries
- the number of web job vacancies for industries at the first level of NACE classification
- the number of web job vacancies for top 10 industries at the second level of NACE classification



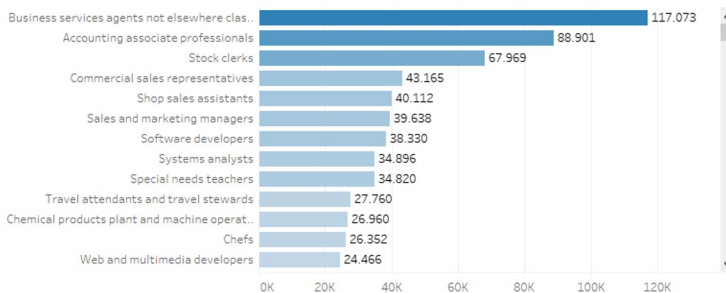
# Analytical perspective: Occupation to skill



Location



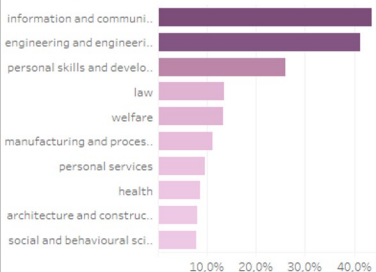
Select the Occupation that you want to Analyze (then select it again to reset your choice)



In this section you can find:

- the regional distribution
- the number of web job vacancies by occupation (ISCO08/ESCO level 4)
- the knowledge, skills, and attitudes and values most in demand in online job postings

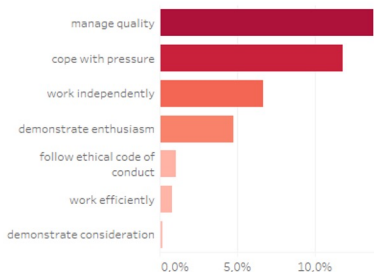
Knowledge



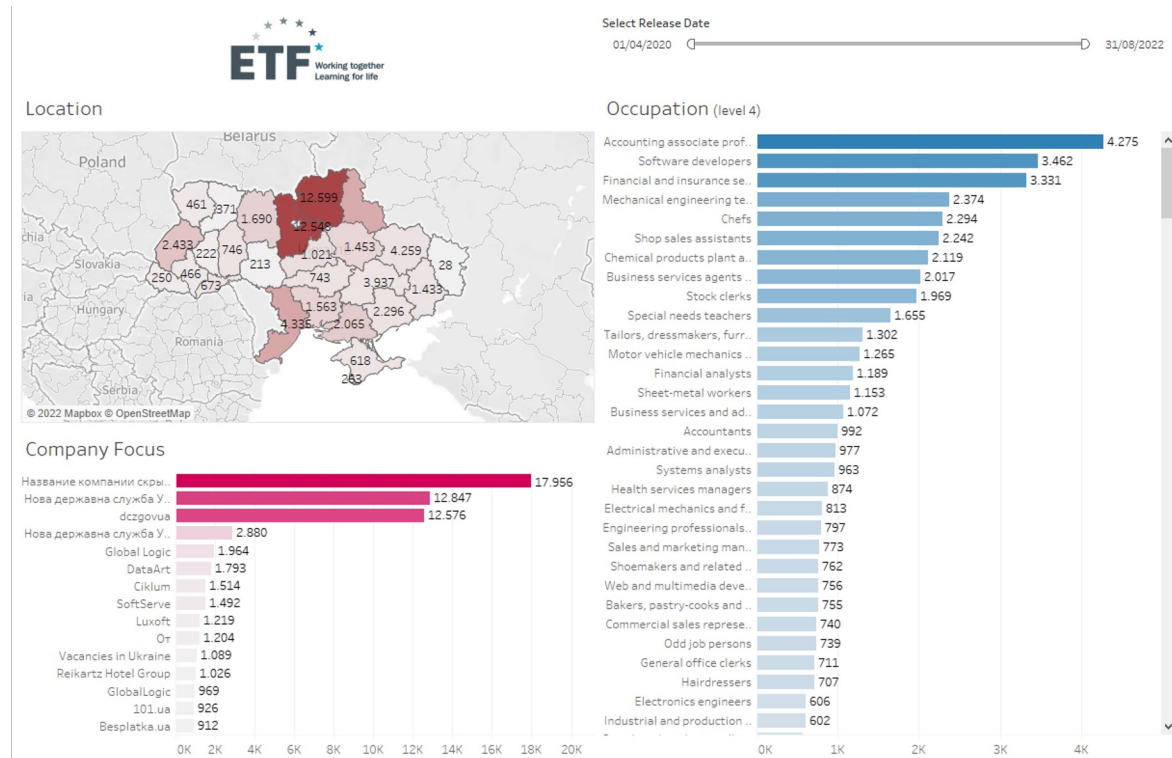
Skills



Attitudes and Values



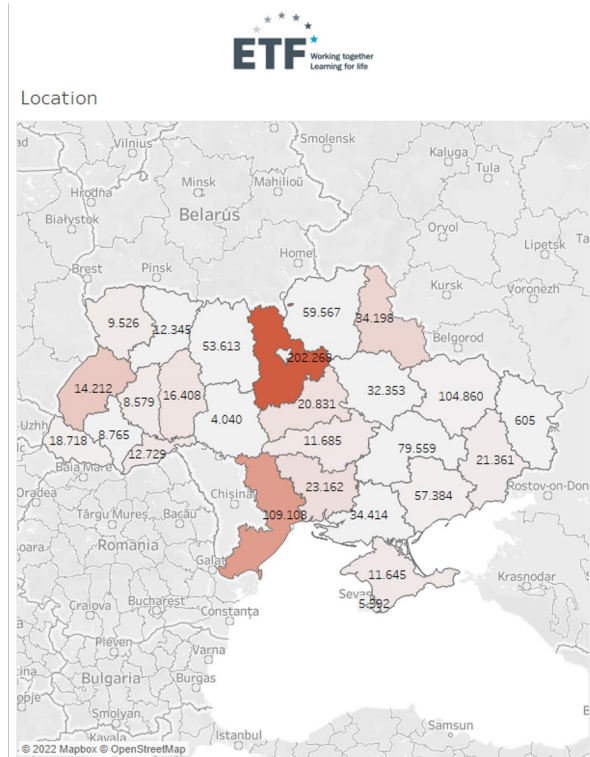
# Analytical perspective: Company focus



In this section you can find charts showing data from a subset of companies:

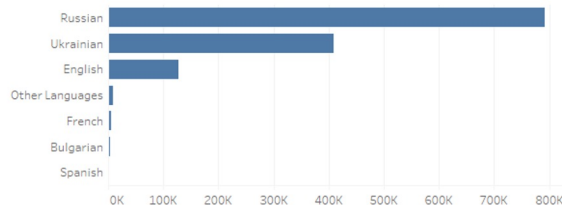
- the regional distribution,
- the number of web job vacancies by company,
- the number of web job vacancies by occupation (ISCO08/ESCO level 4)

# Location language

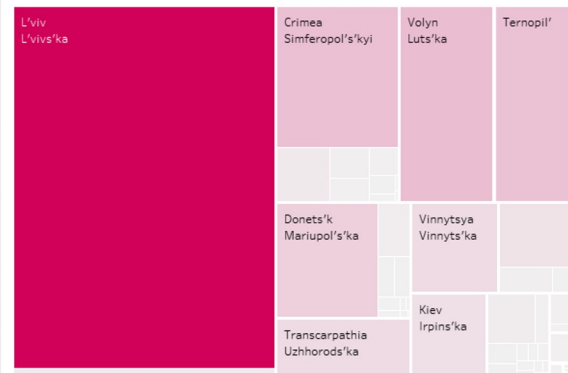


Select Release Date  
01/04/2020 31/08/2022

## Language



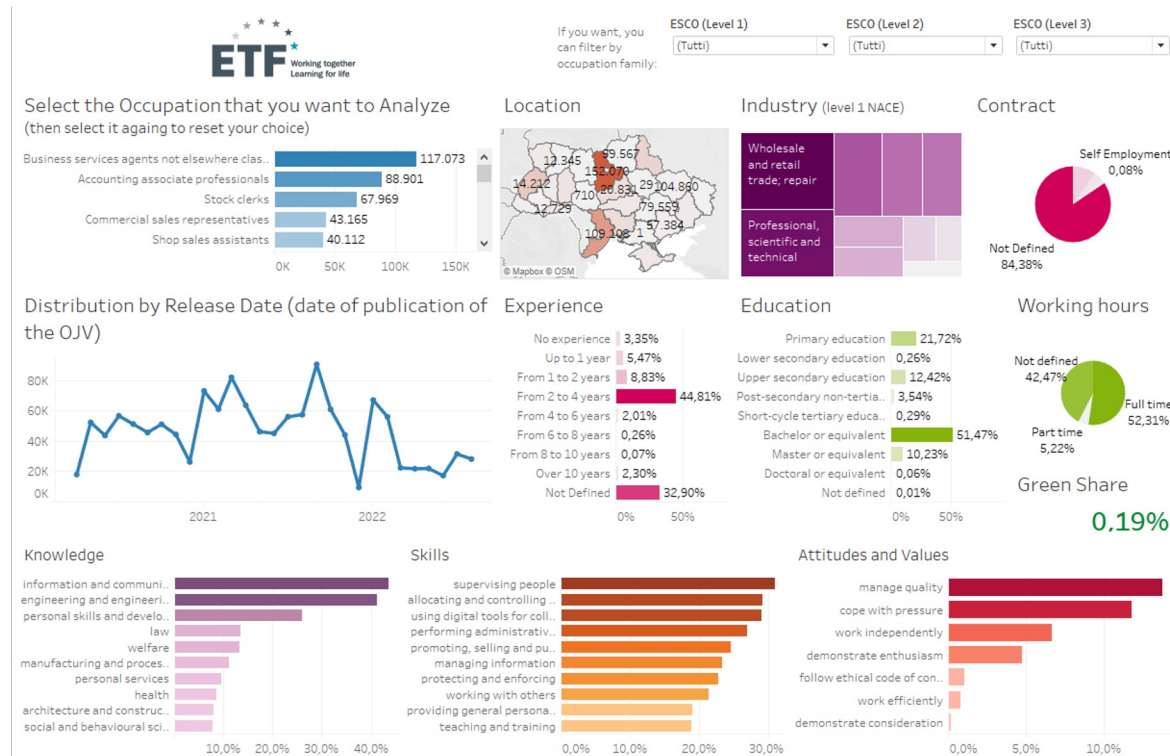
## Province



In this section you can find:

- the regional distribution
- the distribution by province
- the number of online job vacancies posted by language used in the posting

# Analytical perspective: Professional dashboard

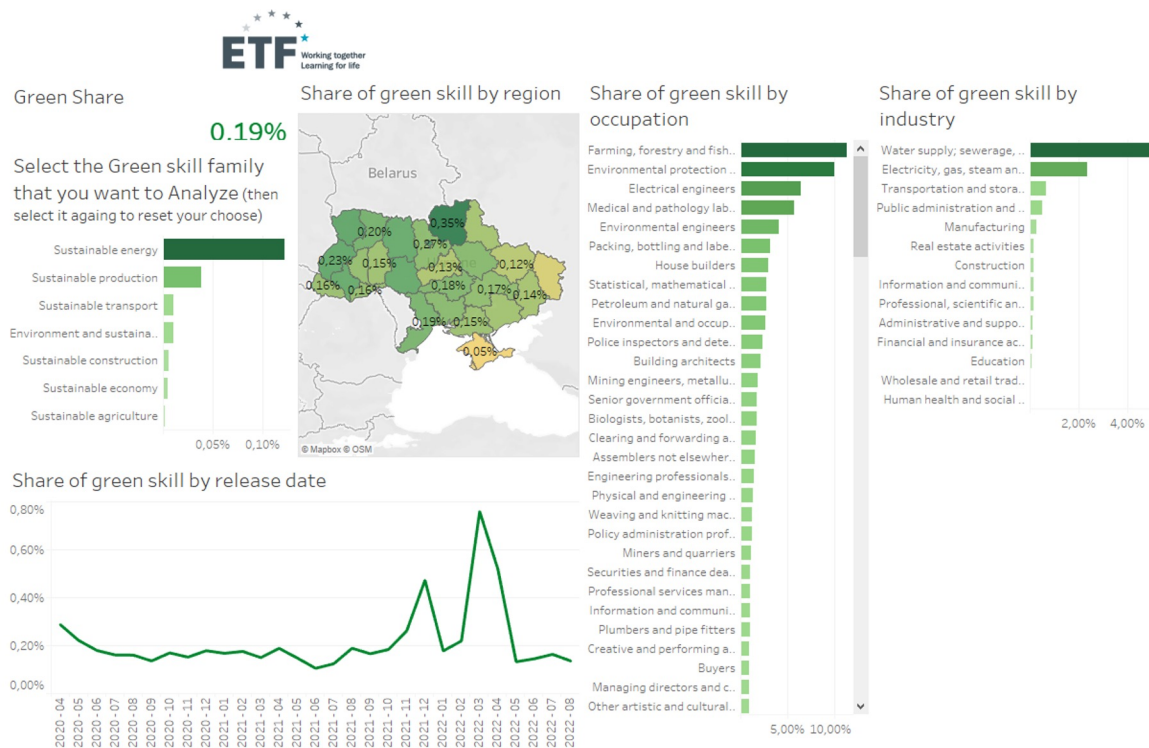


In this section you can find all the variables considered previously.



*TIP: Select the occupation of interest to obtain a global overview of its job demand on the web*

# Analytical perspective: Green skill



In this section you can find the Green Share (the proportion of job vacancies requiring green skills) by:

- Green family
- Region
- Occupation (ESCO level 4)
- Industry
- Month (timeline)



*TIP: Select a Green family of interest to show specific data for this subset of skills*