

# BELARUS

## RECOMMENDATIONS FOR POLICY MAKERS

### 1. Adapt skills intelligence and workforce planning to reflect the diversity of employers



Strengthen data collection for evidence-based planning, monitoring and evaluation.

Establish a co-ordination mechanism for SME support organisations.

Use big data to strengthen skills anticipation.

### 2. Provide targeted courses to SME managers and entrepreneurs



Bring all SME training under one roof.

Monitor the productivity and ability of SMEs to permanently adapt to changing environments and market conditions.

Build on the existing Council for Entrepreneurship Development



### 3. Make use of new learning opportunities offered to SMEs through smart specialisation



Provide targeted support to SMEs to facilitate their integration into global value chains.

Encourage SMEs to move from low to high valued-added activities.



### 4. Integrate the entrepreneurship key competence approach into pre and in-service teacher training



Define learning outcomes of entrepreneurship at all education levels.

Ensure teachers' ability to develop entrepreneurship key competences.

Establish formal career guidance to provide more targeted and systematic support to students with entrepreneurial aspirations.



### 5. Provide targeted support to regional entrepreneurial ecosystems



Focus on competitive areas of economic activity.

Identify possible spin-offs from state-owned companies or clusters.

Concentrate on relevant sub-sectors of the economy in each region.



### 6. Make use of resource centres to improve VET quality, efficiency and equity



Establish Centres of Excellence in the regions.

Deepen and extend the relationship of these centres with employers.

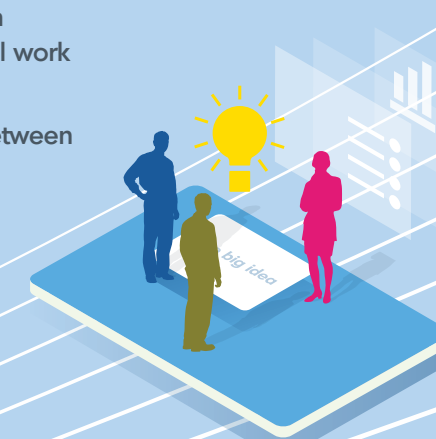
Cooperate and coordinate with other skills providers.

### 7. Modernise teacher training



Focus vocational teacher education on professional competence and practical work experience.

Move away from the differentiation between practical and theoretical teaching.



### 8. Restructure and optimise VET provider networks at regional level



Optimise the VET provider network.

Provide capacity building in change management and redesign organisational and management structures.

Prepare the ground for establishing Centres of Excellence at regional level.